

APPENDIX A | TABLE LISTINGS

A. CITY OF OCEANSIDE

3.0 Jurisdictional Boundary

Jurisdictional Boundary Characteristics (A-3.1a)	66
Public School District Information (A-3.4a)	69

4.0 Population and Housing

Resident Population (A-4.1a)	70
Housing Characteristics (A-4.1b)	71
Age Distribution (A-4.2a)	71
Income Characteristics (A-4.3a)	72
Other Socioeconomic Indicators (A-4.4a)	73
Point-in-Time Homeless Counts (A-4.5a)	74
Pollution Burdens and Susceptible Population (A-4.6a)	76
Estimated Carbon Footprint Baseline Years (A-4.6b)	77

5.0 Organization

Current City Council Roster (A-5.1a)	78
Budgeted Staffing Levels (A-5.2a)	82

6.0 Municipal Service Functions

Potable Water Service Function (A-6.1a)	85
Available Potable Water Supplies (A-6.1b)	86
Potable Water Demands (A-6.1c)	88
Wastewater Function (A6.2a)	93
Wastewater Treatment Capacities (A-6.2b)	94
Wastewater Discharge Capacities (A-6.2c)	95
San Luis Rey Service Area, Recent Wastewater Demands (A-6.2d)	97
La Salina Service Area, Recent Wastewater Demands (A-6.2e)	98
Integrated Fire Protection, Emergency Medical, + Ambulance Functions (A-6.3a)	100
Budgeted Staffing - Fire, Emergency Medical + Ambulance (A-6.3b)	101
Fire Stations' Assignments as of FY2022 (A-6.3b)	103
Fire Protection and EMS Demands (A-6.3c)	106
Ambulance Transport Demands Only (A-6.3d)	106
Lifeguard Service Demands Only (A-6.3e)	107
Parks + Recreation Function + Associated Classes (A-6.4a)	109
Parks + Recreation Function: Aquatic Class (A-6.4b)	110
Parks + Recreation Function: Aquatics Class Demands (A-6.4c)	111
Parks + Recreation Function: Parks + Open Space Class (General Uses) (A-6.4d)	111
Parks + Recreation Function: Parks + Open Space Class Demands (A6.4e)	113
Parks + Recreation Function: Community Recreation Class (A6.4f)	114
Community Development Function (A-6.5a)	116
Community Development Function: Planning Demands (A-6.5b)	117
Community Development Function: Building Demands (A-6.5c)	118

Community Development Function: Code Enforcement Demands (A-6.5d)	119
Community Development Function: Engineering Demands (A-6.5e)	120
Community Development Function: Housing Assistance Demands (A6.5f)	121
Community Development Function: RHNA Results (A-6.5g)	123
Community Development Function: Most Recent RHNA Results (A-6.5h).....	123
Community Development Function: Current RHNA Cycle (A-6.5j).....	124

7.0 Finances

Total Budgeted Expenses (A-7.1a)	125
Total Actual Expenses (A-7.1b)	126
Total Budgeted Revenues (A-7.1c)	126
Total Actual Revenues (A-7.1d)	127
Actual General Fund Expenses and Revenues (A-7.2a)	128
General Fund: Spendable Fund Balance (A-7.2b).....	129
Audited Assets (A-7.3a).....	131
Audited Liabilities (A-7.3b)	131
Audited Net Position (A-7.3c).....	132
Measuring Liquidity (A-7.4a).....	134
Measuring Capital (A-7.4b).....	134
Measuring Margin (A-7.4c)	135
Measuring Asset Management (A-7.4d)	136
Pension Enrollee Information (A-7.5a).....	137
Employer Pension Contributions (A-7.5b)	137
Pension Funding Status (A-7.5c)	138

B. OCEANSIDE SMALL CRAFT HARBOR DISTRICT

3.0 Jurisdictional Boundary

Jurisdictional Boundary Characteristics (A-3.1a)	147
--	-----

4.0 Population and Housing

Resident Population (B-4.1a).....	149
Housing Characteristics (B-4.1b).....	150
Pollution Burdens and Susceptible Population (A-4.6a)	154

5.0 Organization

Authorized Functions and Ancillary Classes (B-5.1a).....	155
Oceanside SCHED - Current Board Roster (B-5.1b).....	156
HBAC Current Committee Roster (B-5.1c)	156
Budgeted Staffing Levels (B-5.2a).....	157

6.0 Municipal Services

Oceanside SCHED’s Boat Slip Monthly Per Foot Charges (B-6.1a)	160
Oceanside SCHED’s Boat Slip Waiting Lists (B-6.1b).....	161
Oceanside SCHED’s Liveaboards Waiting Lists (B-6.1c)	161
Oceanside SCHED’s Public Parking Capacities (B-6.1d)	162
U.S. Army Corps of Engineering - Annual Dredging (B-6.2a)	165

7.0 Finances

Total Budgeted Expenses (B-7.1a) 166
 Total Actual Expenses (B-7.1b) 167
 Total Budgeted Revenues (B-7.1c) 167
 Total Actual Revenues (B-7.1d) 168
 Unassigned Fund Balance + Monthly Coverage Equivalents (B-7.2a) 169
 Audited Assets (B-7.3a) 170
 Audited Liabilities (B-7.3b) 171
 Audited Net Position (B-7.3c) 171
 Measuring Liquidity (B-7.4a) 172
 Measuring Capital (B-7.4b) 173
 Measuring Margin (B-7.4c) 174
 Measuring Asset Management (B-7.4d) 175

C. MORRO HILLS COMMUNITY SERVICES DISTRICT

3.0 Jurisdictional Boundary

Jurisdictional Boundary Characteristics (C-3.1a) 182
 Public College + School Districts Information (C-3.4a) 184

4.0 Demographics

Resident Population (C-4.1a) 185
 Housing Characteristics (C-4.1b) 185
 Age Distribution (C-4.1c) 186
 Income Characteristics (C-4.3a) 187
 Other Socioeconomic Indicators (C-4.4a) 187
 Pollution Burdens and Susceptible Population (C-4.6a) 190
 Estimated Carbon Footprint Baseline Years (C-4.6b) 192

5.0 Organization

Authorized Functions and Ancillary Classes (C-5.1a) 193
 Current Board Roster (C-5.1b) 193

6.0 Municipal Services

Street Function: Roadway System (C-6.1a) 195
 Average Daily Vehicle Counts at Primary Access Points (C-6.1b) 198
 Recent + Current Traffic Assessments (C-6.1c) 199

7.0 Finances

Unassigned Fund Balance + Monthly Coverage Equivalents (C-7.2a) 200
 Audited Assets (C-7.3a) 201
 Audited Liabilities (C-7.3b) 202
 Net Position (C-7.3c) 202

APPENDIX B | MAP LISTINGS

A. CITY OF OCEANSIDE

City of Oceanside Jurisdictional and Sphere of Influence Boundaries (A-1)	68
City of Oceanside Wastewater Service Areas (A-2)	96
City of Oceanside Fire Station Locations (A-3).....	104

B. OCEANSIDE SMALL CRAFT HARBOR DISTRICT

Oceanside SCHD Jurisdictional and Sphere of Influence Boundaries (B-1).....	148
---	-----

C. MORRO HILLS COMMUNITY SERVICES DISTRICT

Morro Hills CSD Jurisdictional and Sphere of Influence Boundaries (C-1).....	183
Morro Hills CSD’s Roadway System (C-2)	197

APPENDIX C | REFERENCES AND SOURCE MATERIALS

References & Source Materials.....	209
------------------------------------	-----

APPENDIX D | PROPOSED SPECIAL STUDY AREA FOR CITY OF OCEANSIDE

Map No. D-1	211
-------------------	-----

APPENDIX E | PROPOSED SPECIAL STUDY AREA FOR MORRO HILLS CSD

Map No. E-1	212
-------------------	-----

APPENDIX F | COMMENTS RECEIVED ON THE REVISED DRAFT REPORT

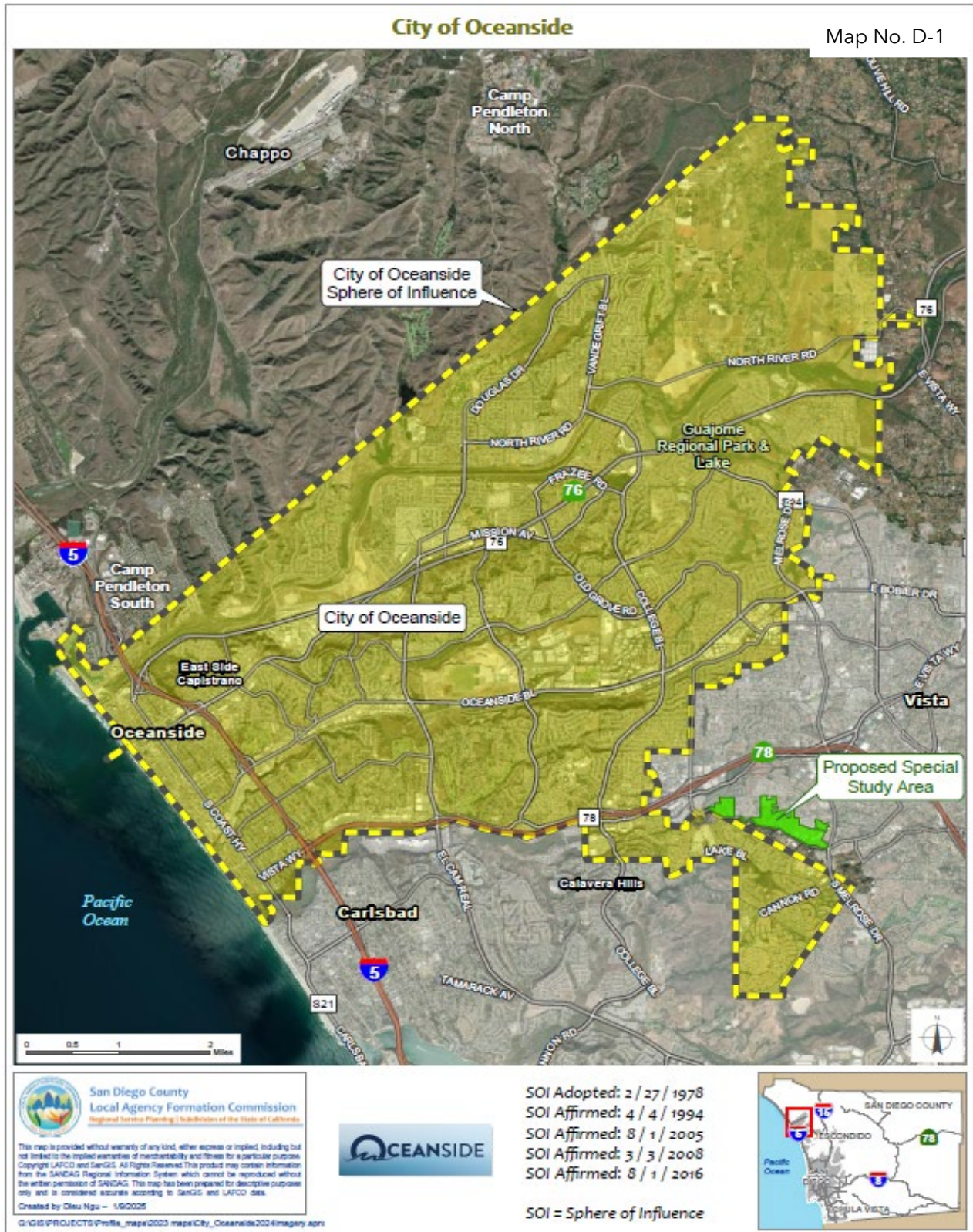
City of Vista, City of Oceanside, Morro Hills CSD, SCHD	213
---	-----

APPENDIX C | REFERENCES AND SOURCE MATERIALS

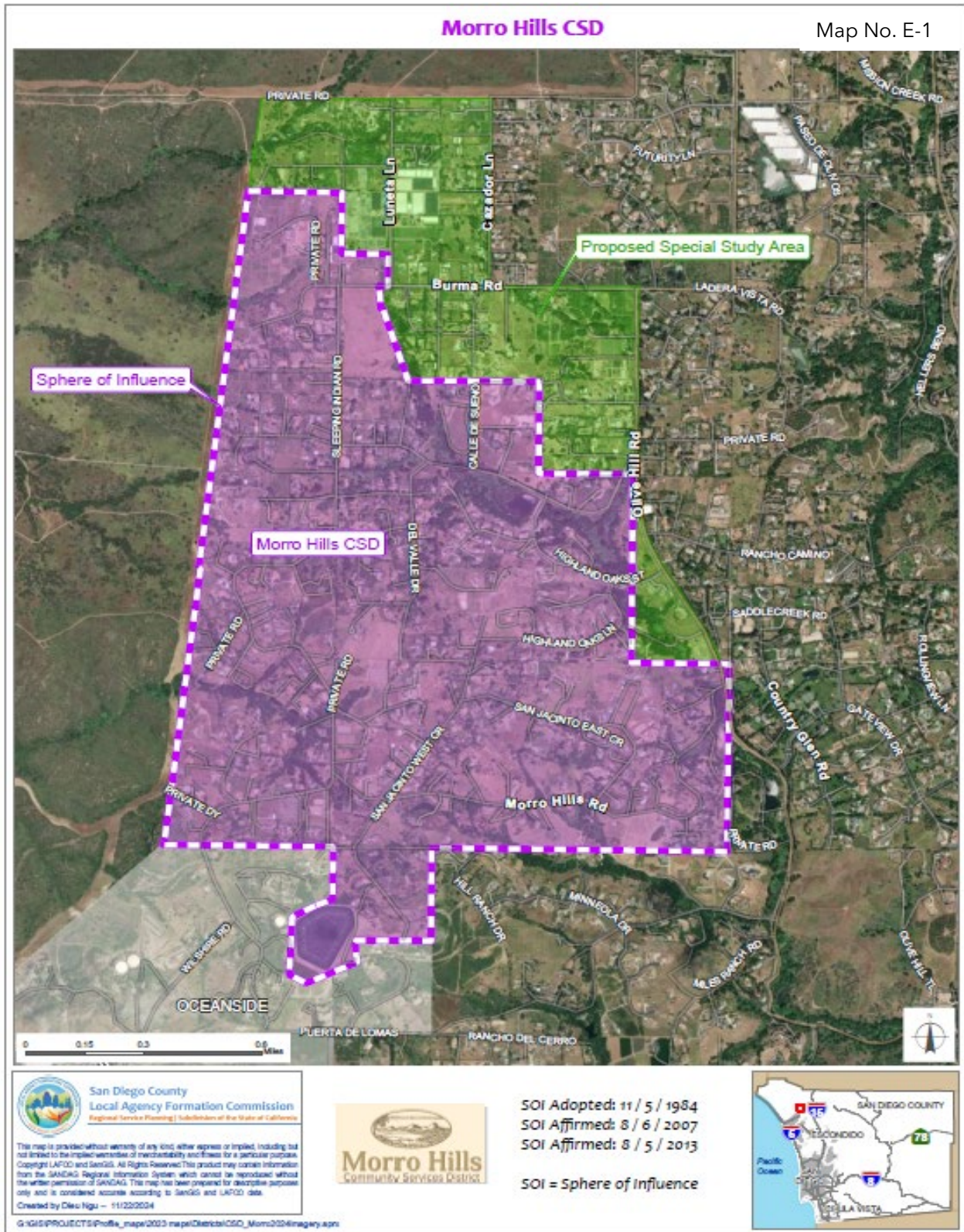
A complete source list is available by contacting San Diego LAFCO
Municipal Service Review on the Oceanside Region

Blank for Photocopying

APPENDIX D | PROPOSED SPECIAL STUDY AREA FOR CITY OF OCEANSIDE



APPENDIX E | PROPOSED SPECIAL STUDY AREA FOR MORRO HILLS CSD



APPENDIX F | COMMENTS RECEIVED ON THE REVISED DRAFT REPORT

Blank for Photocopying