

RESOLUTION NO. 2024-013

**RESOLUTION OF THE
SAN DIEGO COUNTY LOCAL AGENCY FORMATION COMMISSION
MAKING DETERMINATIONS**

SPHERE OF INFLUENCE UPDATES FOR THE OCEANSIDE REGION

City of Oceanside
Oceanside Small Craft Harbor District
Morro Hills Community Services District

WHEREAS, the San Diego County Local Agency Formation Commission, hereinafter referred to as the “Commission”, is a political subdivision of the State of California with regulatory and planning responsibilities to facilitate orderly growth and development under the Cortese-Knox-Hertzberg Local Government Reorganization Act of 2000; and

WHEREAS, the Commission is responsible under Government Code Section 56430 to regularly prepare municipal service reviews to independently and comprehensively evaluate the sufficiency of local governmental services to inform its regulatory and other planning activities; and

WHEREAS, the Commission completed a municipal service review on public services within the Oceanside region consistent with statute and includes the City of Oceanside, Oceanside Small Craft Harbor District (SCHD), and Morro Hills Community Services District (CSD) hereafter referred as the “affected agencies”; and

WHEREAS, the Executive Officer’s written report on the municipal service review was presented to and approved by the Commission on November 4, 2024; and

WHEREAS, the municipal service review on the Oceanside region serves as the informing document for the Commission to proceed with sphere of influence updates for the affected agencies; and

WHEREAS, the Commission is responsible under Government Code Section 56425 to establish spheres of influence for all local agencies under Commission oversight with the added statutory directive that all jurisdictional changes and out-of-agency services must be consistent with the affected agencies’ spheres with limited exceptions; and

WHEREAS, the Commission is also responsible under Government Code Section 56425 to review and update all local agencies’ spheres of influence every five years as necessary; and

WHEREAS, the Executive Officer’s written report and recommendations on sphere of influence updates for the affected agencies in the Oceanside region was presented to the Commission in a manner provided by law; and

WHEREAS, the Commission heard and fully considered all the evidence presented at a public meeting concerning the sphere of influence updates in the Oceanside region on December 2, 2024;

WHEREAS, as part of the sphere of influence update process, the Commission is required pursuant to Government Code Section 56425(e) to make a statement of written determinations with regards to certain factors.

NOW, THEREFORE, BE IT RESOLVED, the Commission hereby finds, determines, and orders the following:

1. The Commission determines the sphere of influence updates for the affected agencies in the Oceanside region represent a project under the California Environmental Quality Act but exempt from further review under the “general rule” provided under State Guidelines 15061(b)(3). This exemption appropriately applies given it can be seen with certainty spheres of influence are planning policies, and any amendments or updates do not make any changes to the environment or authorize any new uses or services.
2. The Commission has considered the Executive Officer’s written report on the sphere of influence updates and recommendations therein for the affected agencies.
3. The Commission makes the statements set forth in Exhibit “A” in determining the spheres of influence for the affected agencies.
4. The Commission APPROVES updates for the affected agencies to affirm with no changes the existing sphere of influence designations for all three affected agencies.
 - a) The updated sphere of influence for City of Oceanside is affirmed as shown as Exhibit “B”.
 - b) The updated sphere of influence for Oceanside SCD is affirmed as shown as Exhibit “C”.
 - c) The updated sphere of influence for Morro Hills CSD is affirmed as shown in Exhibit “D.”

PASSED AND ADOPTED by the Commission on December 2, 2024 by the following vote:

AYES: ANDERSON, BECKER, DESMOND, MACKENZIE, MATHIS, WHITBURN, WHITE and WILLIS

NOES: NONE

ABSENT: DRAKE, VARGAS, and VON WILPERT

ABSTAINING: NONE

ATTEST:



Keene Simonds
Executive Officer

EXHIBIT A

SPHERE OF INFLUENCE UPDATES FOR THE OCEANSIDE REGION

STATEMENT OF DETERMINATIONS GOVERNMENT CODE SECTION 56425

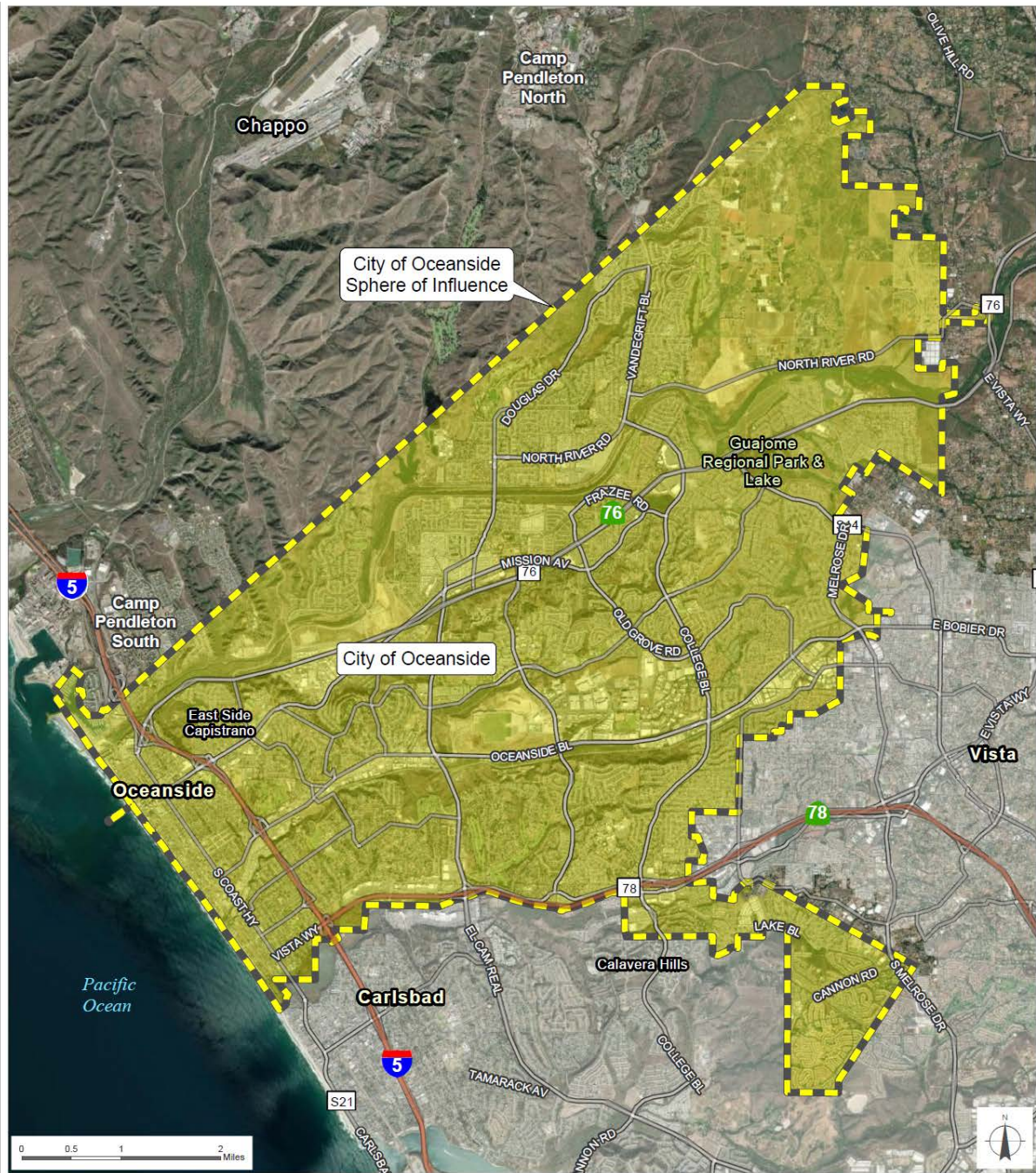
City of Oceanside
Oceanside Small Craft Harbor District
Morro Hills Community Services District

1. With respect to present and planned land uses in the area as required under Section 56425(e)(1), the Commission independently determines the following.
 - a) The affected territory included in the three proposed sphere of influence updates in the Oceanside region largely overlaps and collectively spans 28,093 acres with an estimated 175,616 full-time residents. The affected territory is under the land use authority of either the City of Oceanside or County of San Diego. The portion of the affected territory within Oceanside and Oceanside SCHD is predominately urban in nature ranging from low density residential to more high-density residential along with commercial uses. Morro Hills CSD – and consistent with the County General Plan – is largely rural residential with limited agricultural uses. A limited amount of agriculture and open-space lands exist within the three proposed spheres of influence and is not considered significant.
2. With respect to present and probable need for public facilities and services in the area as required under Section 56425(e)(2), the Commission independently determines the following.
 - a) The areas within the proposed sphere of influence updates reflect the appropriate current and near-term jurisdictional boundaries as well as service areas of the affected agencies as determined by the Commission.
3. With respect to present capacity of public facilities and adequacy of public services the agencies provide or are authorized to provide as required under Section 56425(e)(3), the Commission independently determines the following.
 - a) A comprehensive evaluation of public services and adequacy therein for the affected territory has been separately prepared by the Commission as part of a municipal service review. The Commission relies on the municipal service review in making all related sphere of influence determinations for the affected agencies.
4. With respect to the existence of any relevant social or economic community of interest in the area as required under Section 56425(e)(4), the Commission independently determines the following.
 - a) The areas within the proposed sphere of influence updates have established social and economic interdependencies with the affected agency through existing or – in limited instances – expected provision of municipal services. These existing interdependencies have been memorialized by the Commission in past actions to include the lands in the sphere of influence of the affected agencies.

5. With respect to the present and probable need for public water, sewer, and fire protection services of any disadvantaged unincorporated communities within or adjacent to the sphere as required under Section 56425(e)(5), the Commission independently determines the following.
 - a) Lands immediately adjacent to the spheres include lands qualifying as disadvantaged unincorporated communities and evaluated as part of the preceding municipal service review.

EXHIBIT B

SPHERE OF INFLUENCE UPDATES FOR THE OCEANSIDE REGION CITY OF OCEANSIDE



This map is provided without warranty of any kind, either express or implied, including but not limited to the implied warranties of merchantability and fitness for a particular purpose. Copyright LAFCO and SanGIS. All Rights Reserved. This product may contain information from the SANDAG Regional Information System which cannot be reproduced without the written permission of SANDAG. This map has been prepared for descriptive purposes only and is considered accurate according to SanGIS and LAFCO data.
Created by Dieu Ngu -- 11/22/2024



SOI Adopted: 2 / 27 / 1978
 SOI Affirmed: 4 / 4 / 1994
 SOI Affirmed: 8 / 1 / 2005
 SOI Affirmed: 3 / 3 / 2008
 SOI Affirmed: 8 / 1 / 2016

SOI = Sphere of Influence

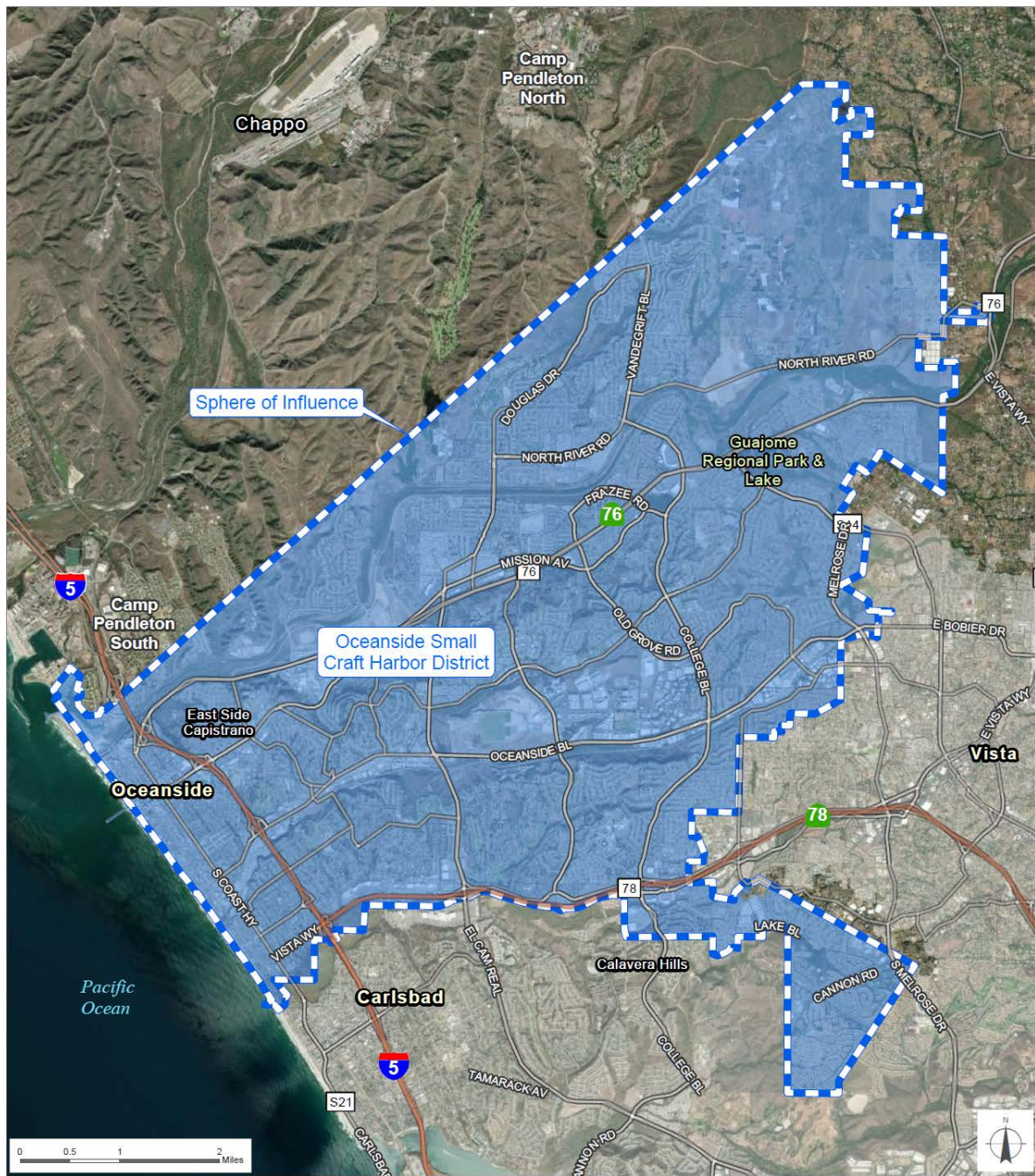


G:\GIS\PROJECTS\Profile_maps\2023 maps\City_Oceanside2024\magery.aprx

Blank for Photocopying

EXHIBIT C

SPHERE OF INFLUENCE UPDATES FOR THE OCEANSIDE REGION OCEANSIDE SMALL CRAFT HARBOR DISTRICT




San Diego County
Local Agency Formation Commission
 Regional Service Planning | Subdivision of the State of California
This map is provided without warranty of any kind, either express or implied, including but not limited to the implied warranties of merchantability and fitness for a particular purpose. Copyright LAFCO and SanGIS. All Rights Reserved. This product may contain information from the SANDAG Regional Information System which cannot be reproduced without the written permission of SANDAG. This map has been prepared for descriptive purposes only and is considered accurate according to SanGIS and LAFCO data. Created by Dieu Ngu - 11/22/2024

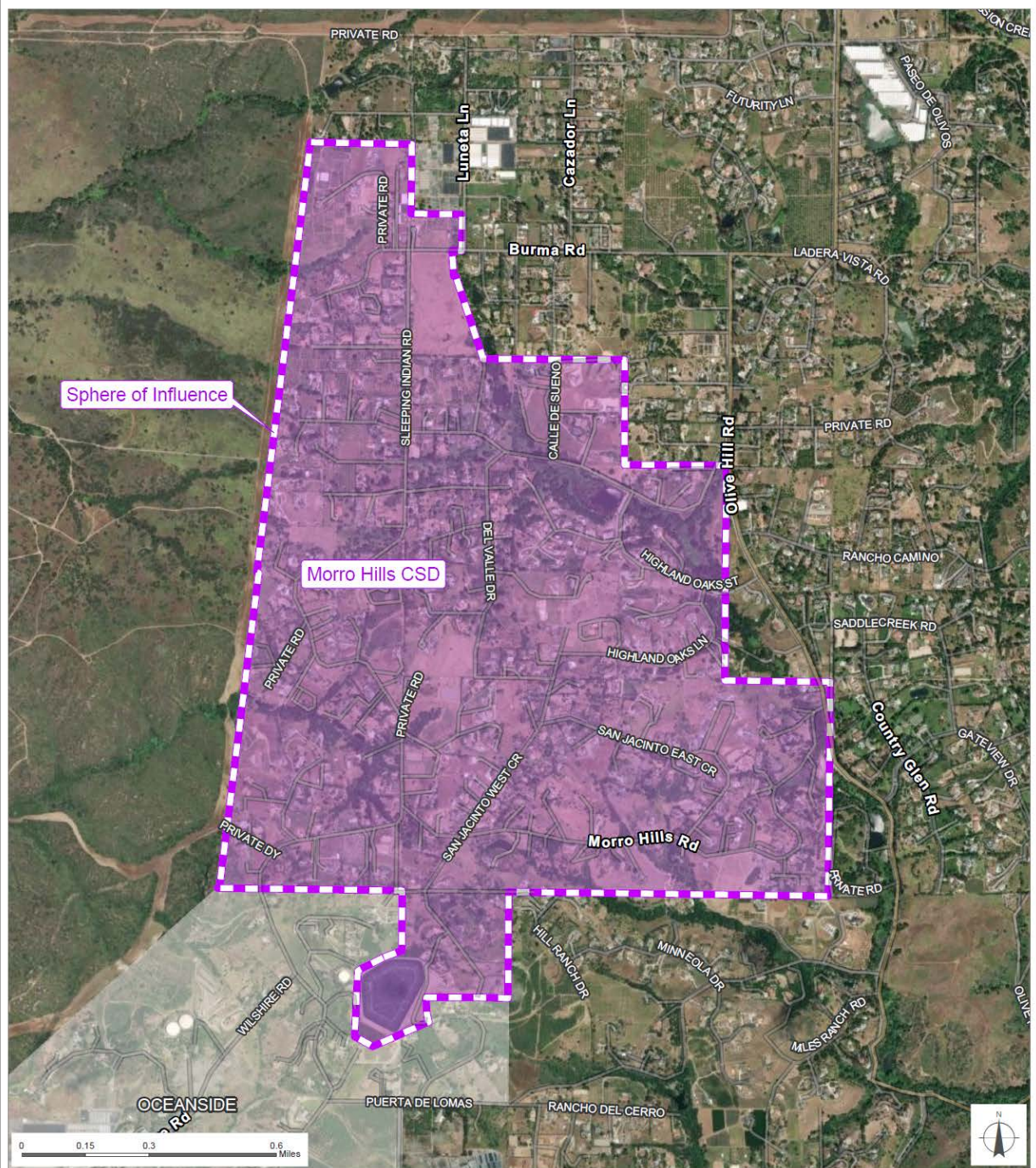
SOI Adopted: 1 / 6 / 1986
 SOI Affirmed: 11 / 7 / 2005
 SOI Reaffirmed: 8 / 6 / 2007
 SOI Affirmed: 3 / 4 / 2013
 SOI = Sphere of Influence



Blank for Photocopying

EXHIBIT D

SPHERE OF INFLUENCE UPDATES FOR THE OCEANSIDE REGION MORRO HILLS COMMUNITY SERVICES DISTRICT




San Diego County
Local Agency Formation Commission
 Regional Service Planning | Subdivision of the State of California

This map is provided without warranty of any kind, either express or implied, including but not limited to the implied warranties of merchantability and fitness for a particular purpose. Copyright LAFCO and SanGIS. All Rights Reserved. This product may contain information from the SANDAG Regional Information System which cannot be reproduced without the written permission of SANDAG. This map has been prepared for descriptive purposes only and is considered accurate according to SanGIS and LAFCO data.
 Created by Dieu Ngu -- 11/25/2024



SOI Adopted: 11 / 5 / 1984
 SOI Affirmed: 8 / 6 / 2007
 SOI Affirmed: 8 / 5 / 2013

SOI = Sphere of Influence



G:\GIS\PROJECTS\Profile_maps\2023_maps\Districts\CSD_Morro2024\imagery v2.aprx

Blank for Photocopying